

He Waka Harakeke A Flax Waka



1. Kōwhiritia tetahi rau pai, kāore he puare, kāore hoki i te tihore. Tapahia te wāhanga mātotoru kia koki te tapahitanga, kia tata ki 1m te roa.



Choose a blade of flax with no holes or splits. Cut it diagonally at the butt end, leaving you with a blade about 1m long.

2. Tapahia te pito mātotoru e tata ana ki te wehenga o ngā tapa o te rau kia koki ai te tapahitanga. Ko te kei o tō waka tēnā

T

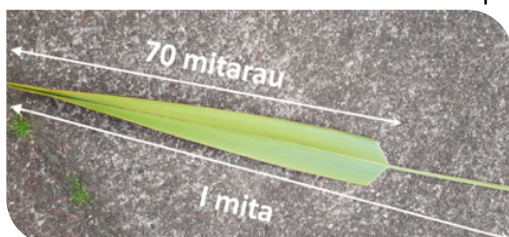


Trim the butt end at an angle close to where the edges of the blade separate from each other. This will be the stern of your waka.

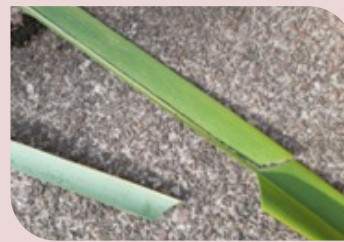
3. Inea kia 70 cm te roa, ā, kei te pito koi, tapahia ngā taha o te rau kia koki ai.



Measure 70cm up from the stern towards the sharp end of the blade and cut the edges of the blade back to the centre at an angle leaving the centre rib in place.



4. Tihoretia kia waihotia te whenu ki waenganui. (arā, te tūarā o te rau.) Ka pēnei tō rau ki tā te pikitia i te taha mauī.



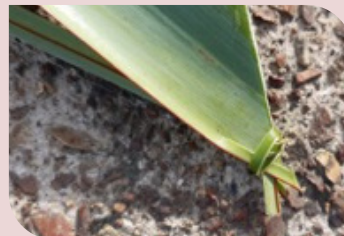
Peel off the sides towards the sharp end of the blade being careful not to split the main part. Your blade should look like the picture on the left.

5. Āta kumea te whenu kia tū ai te pito koi o te rau. Ko te hēra o tō waka tēnā.



Carefully pull back on the mid rib so that the end of the blade curves up. This will be the sail of your waka.

6. Herea te whenu ki te kei, pēnei i te whakaahua nei



Tie the mid rib to the stern of your waka as in the picture.

7. Whakamānutia tō waka, mā te hau o muri e whakaterere.



Launch your waka with the wind blowing from behind to send it on its maiden voyage.